

FOR SALE > MULTIFAMILY

7 – UNIT APARTMENT COMPLEX

16171 EAST 11 MILE ROAD | ROSEVILLE, MICHIGAN



INVESTMENT OPPORTUNITY

INVESTMENT HIGHLIGHTS

- 100% Occupied
- 7 Total Units – 2 Two Bedroom and 5 One Bedroom Units
- Next to Veterans Memorial Park
- Close to Joseph G. Steenland Elementary and Roseville Middle Schools
- Quick Access to I-696

COLLIERS INTERNATIONAL
2 Corporate Drive | Suite 300
Southfield, Michigan 48076

[For More Information Call:](#)

TONY FAYNE
SENIOR ASSOCIATE
PHONE 248 540 1000 EXT 1608
EMAIL tony.fayne@colliers.com



colliers.com/detroit



FOR SALE > MULTIFAMILY

7 – UNIT APARTMENT COMPLEX

16171 EAST 11 MILE ROAD | ROSEVILLE, MICHIGAN



> PROPERTY PHOTOS



TONY FAYNE

PHONE 248 540 1000 EXT 1608

EMAIL tony.fayne@colliers.com



COLLIERS INTERNATIONAL

2 Corporate Dr. | Suite 300
Southfield, Michigan 48076

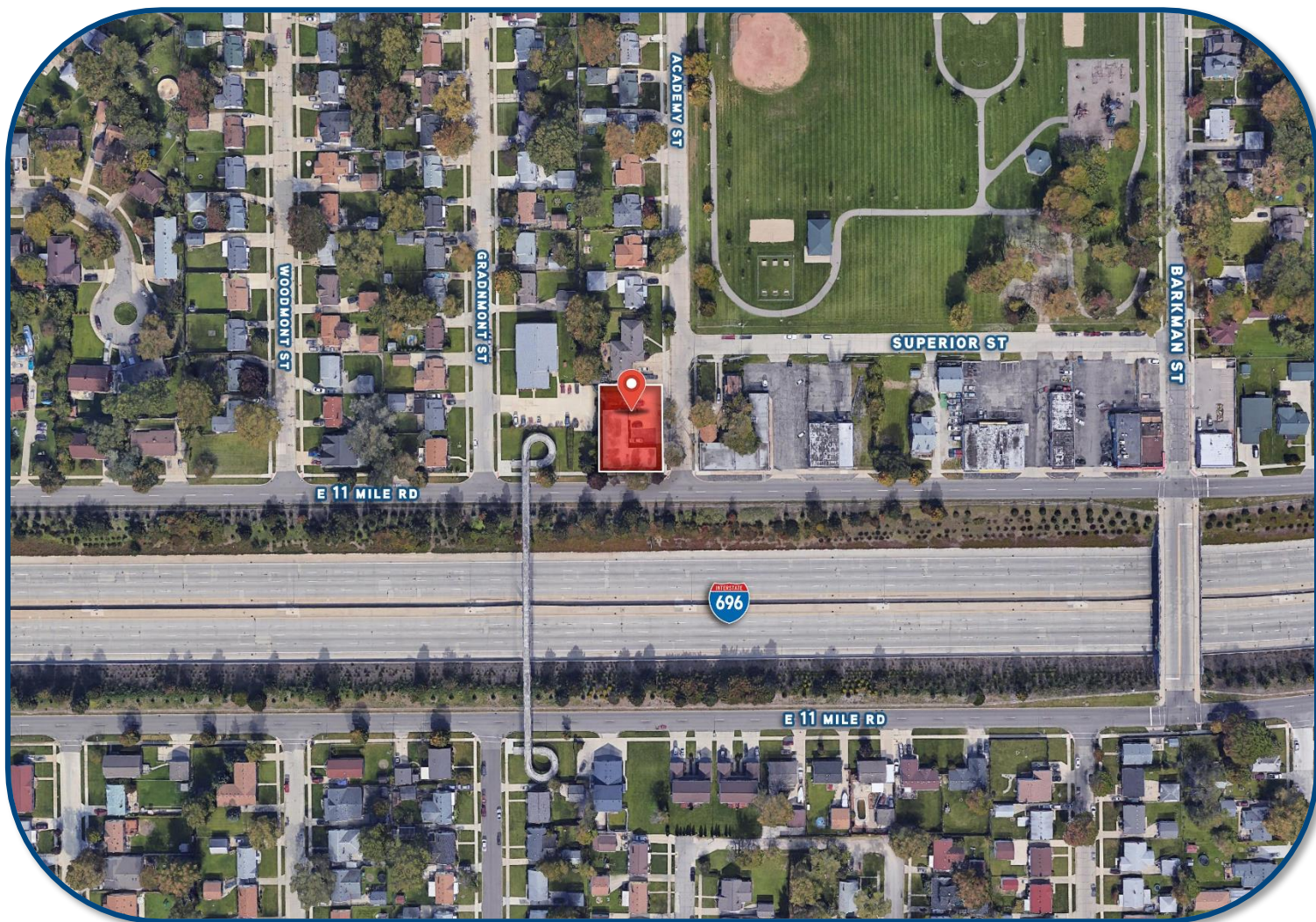
FOR SALE > MULTIFAMILY

7 – UNIT APARTMENT COMPLEX

16171 EAST 11 MILE ROAD | ROSEVILLE, MICHIGAN



> AERIAL MAP



TONY FAYNE
PHONE 248 540 1000 EXT 1608
EMAIL tony.fayne@colliers.com



COLLIERS INTERNATIONAL
2 Corporate Dr. | Suite 300
Southfield, Michigan 48076

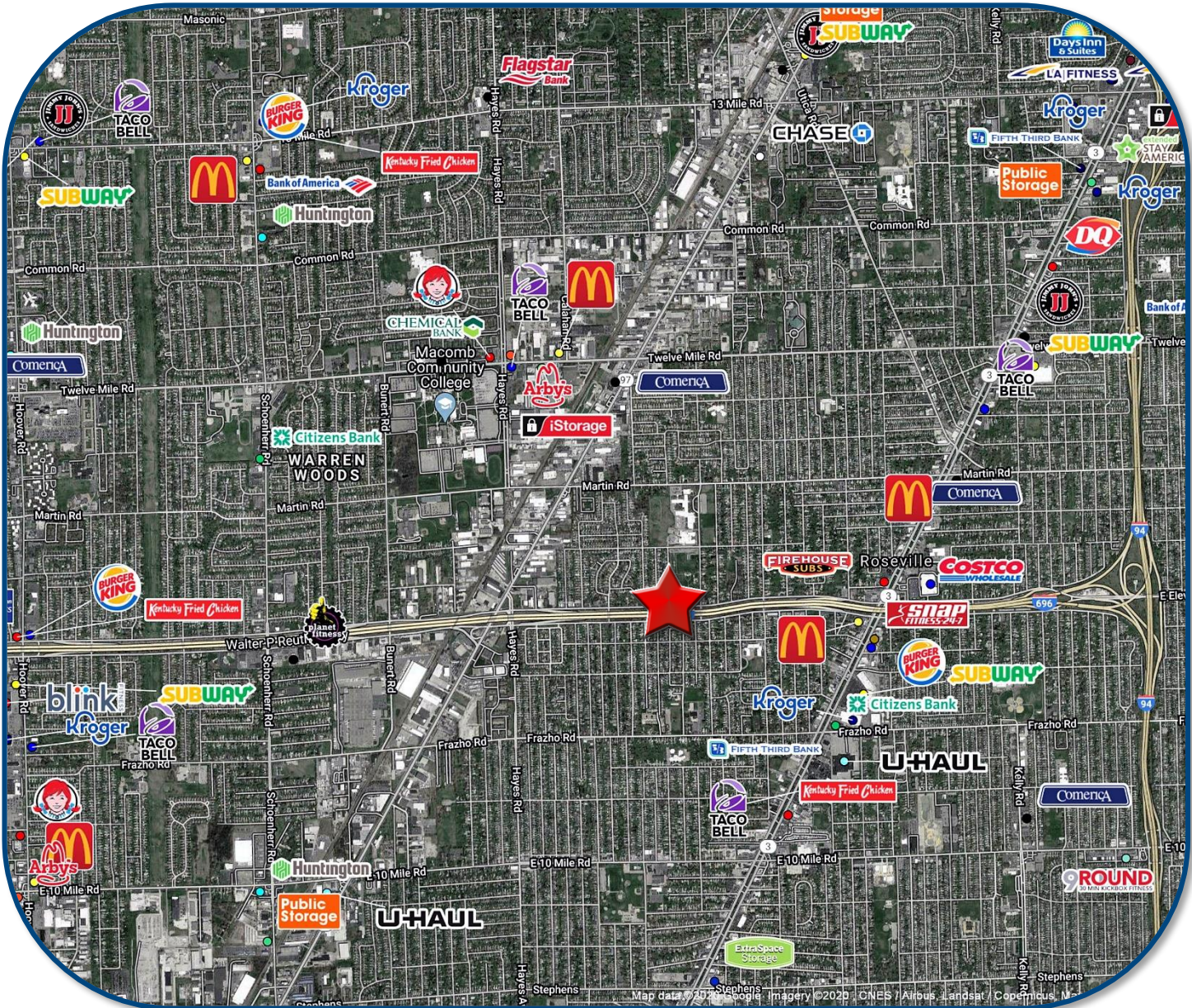
FOR SALE > MULTIFAMILY

7 – UNIT APARTMENT COMPLEX

16171 EAST 11 MILE ROAD | ROSEVILLE, MICHIGAN



> MERCHANT MAP



TONY FAYNE
PHONE 248 540 1000 EXT 1608
EMAIL tony.fayne@colliers.com



COLLIERS INTERNATIONAL
2 Corporate Dr. | Suite 300
Southfield, Michigan 48076